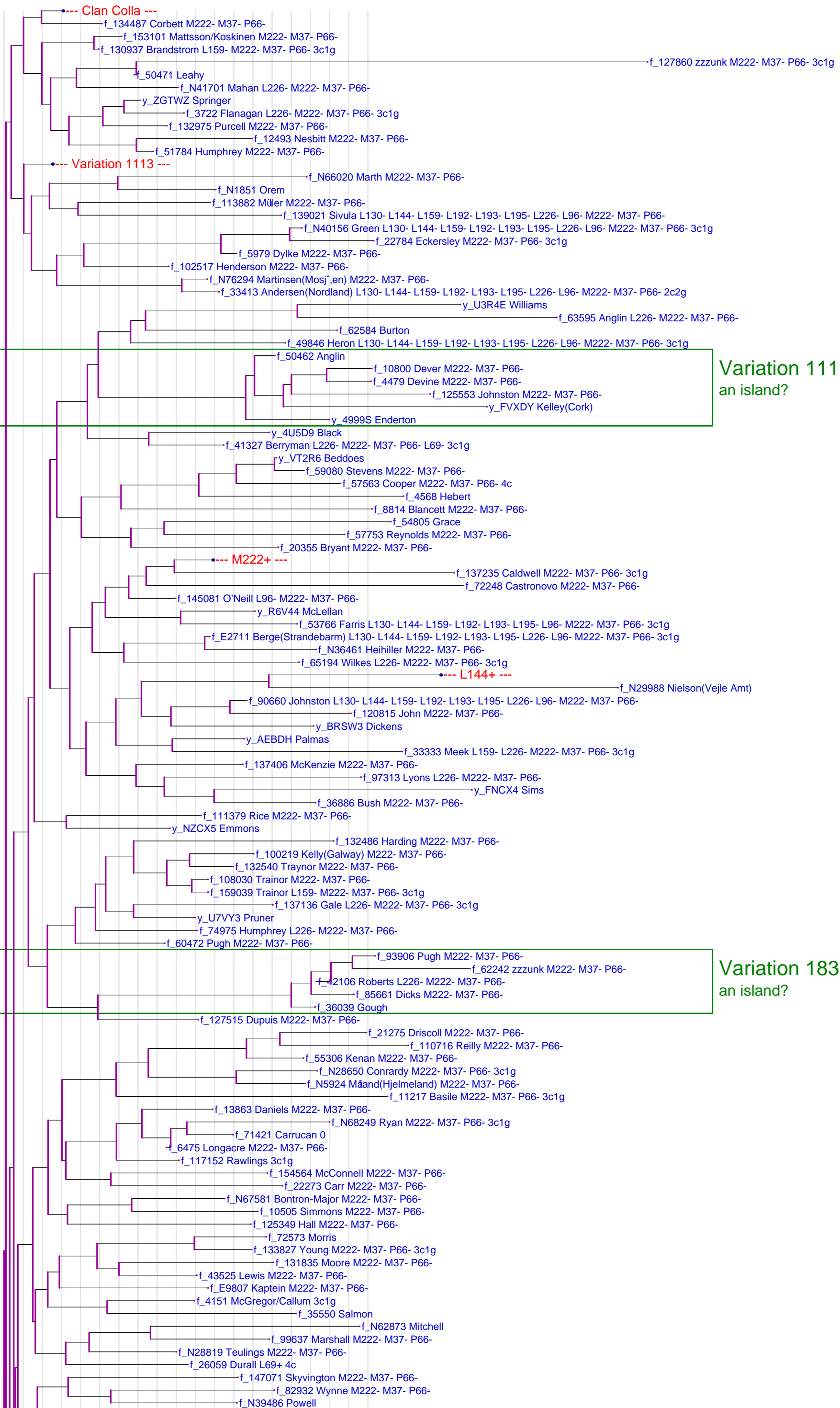
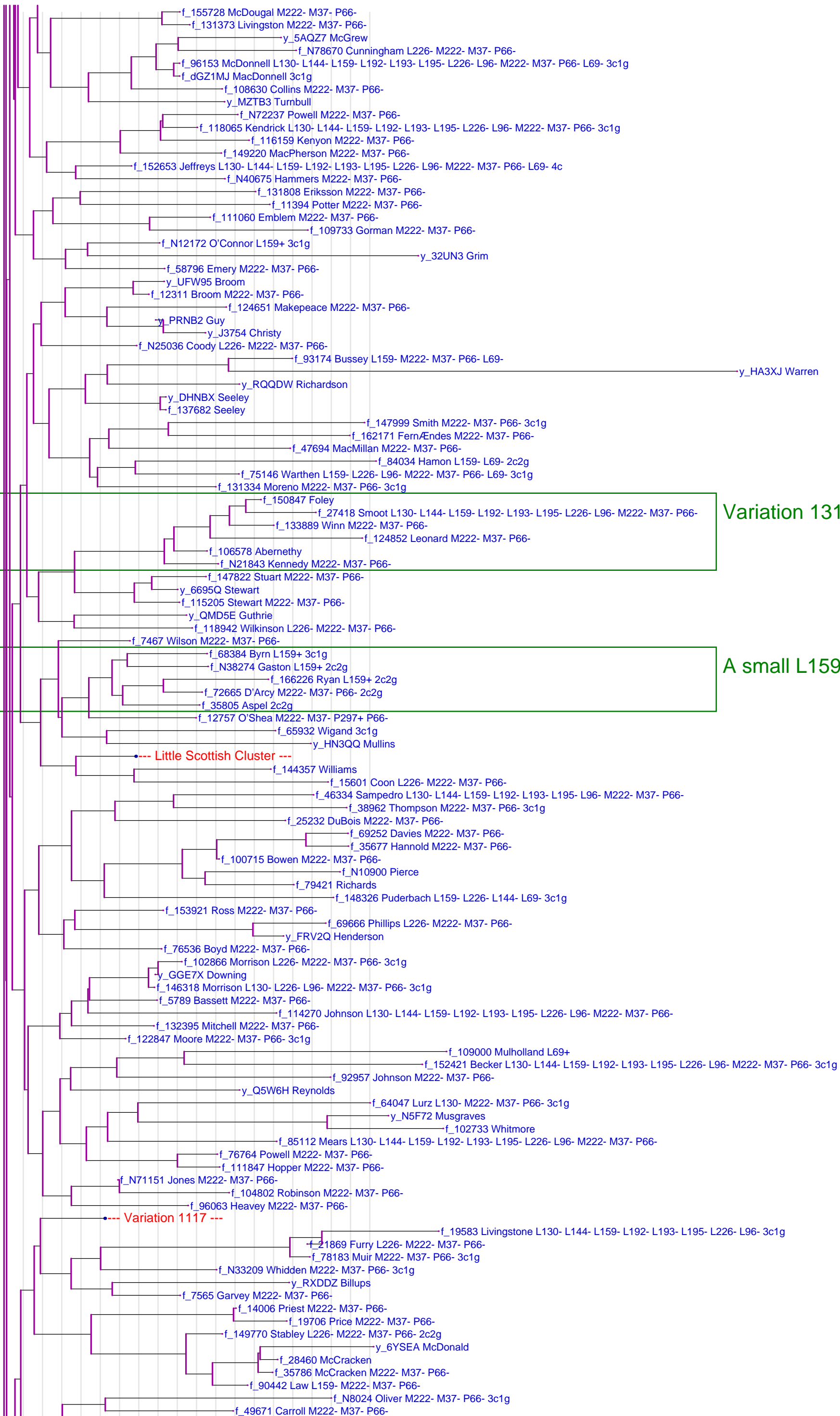


R-L21



The rule separation is 10 generations.

R-L21

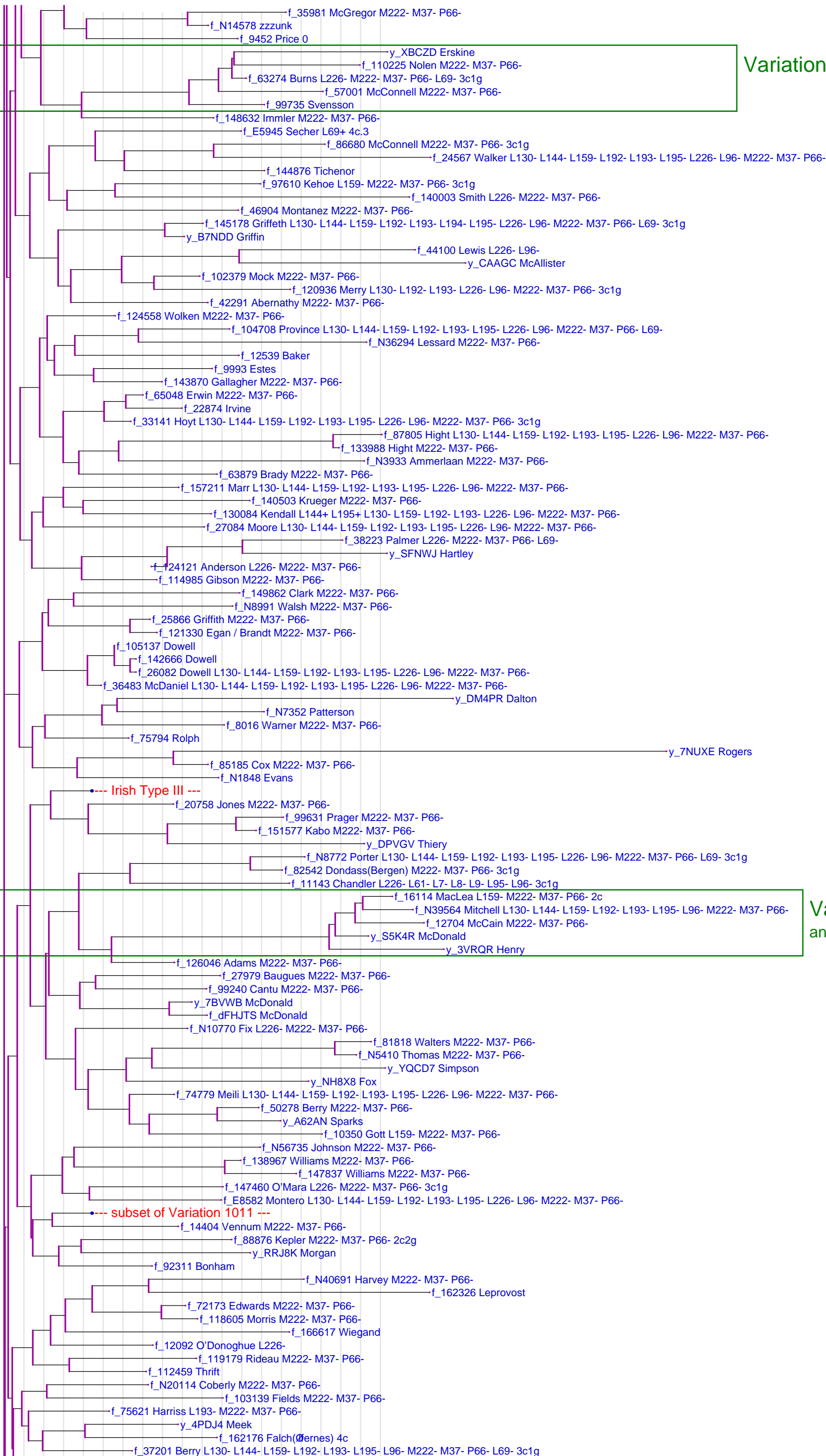


Variation 1310-T4

A small L159+ or 2c2g Cluster

The rule separation is 10 generations.

R-L21



Variation 1410

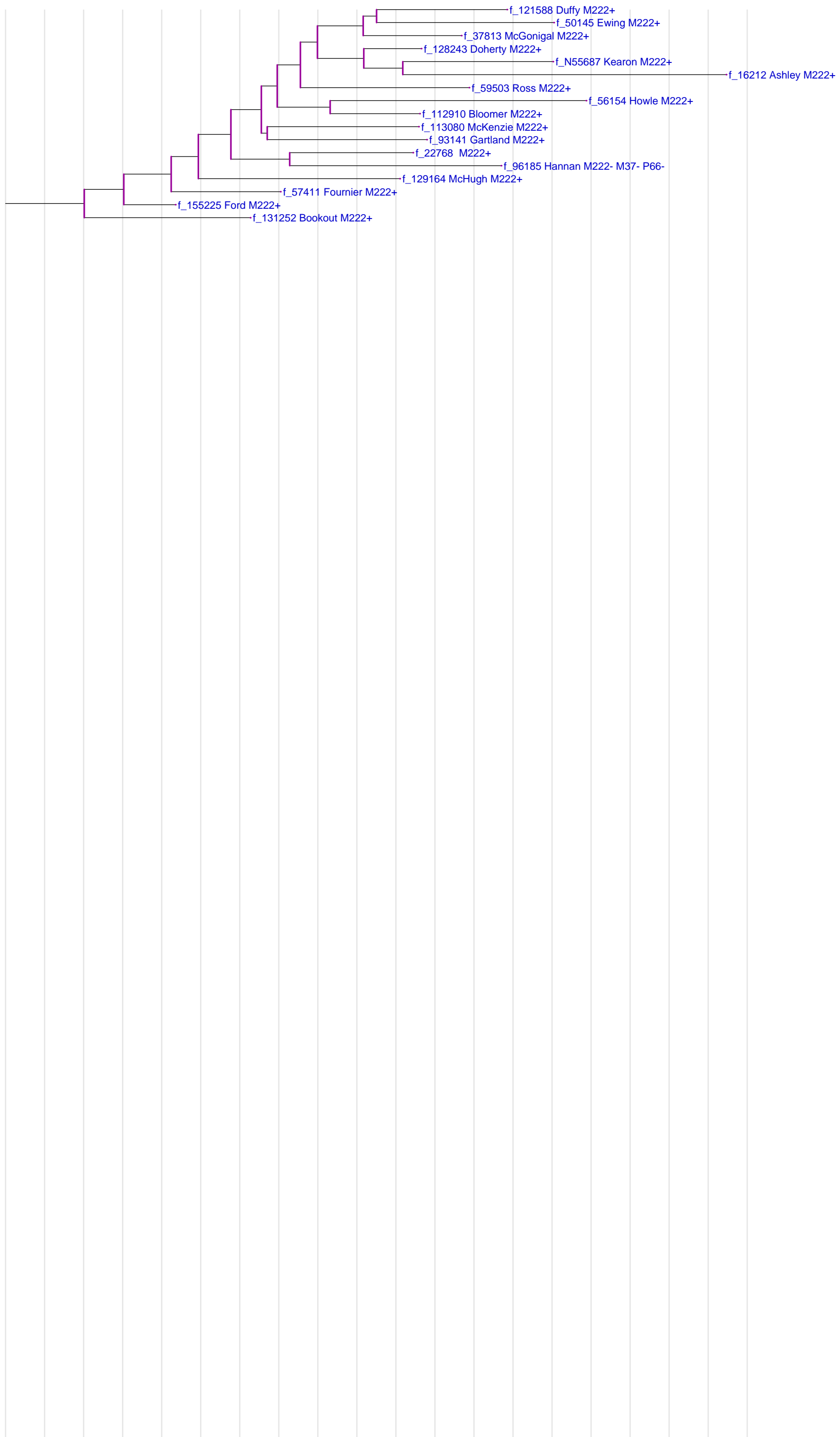
Variation 9919-A-1
an island?

The rule separation is 10 generations.

R-L21



M222+



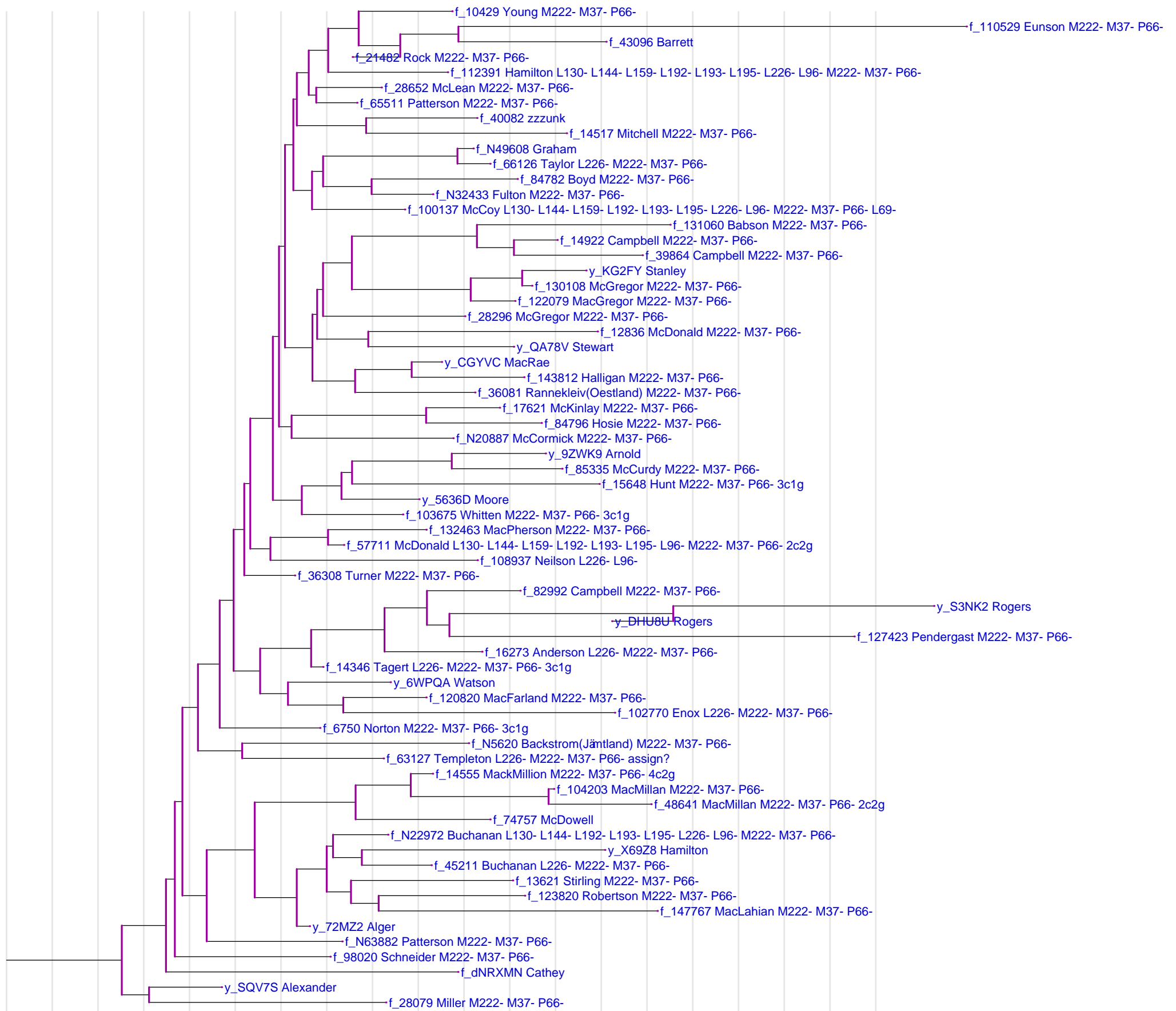
The rule separation is 10 generations.

Little Scottish Cluster

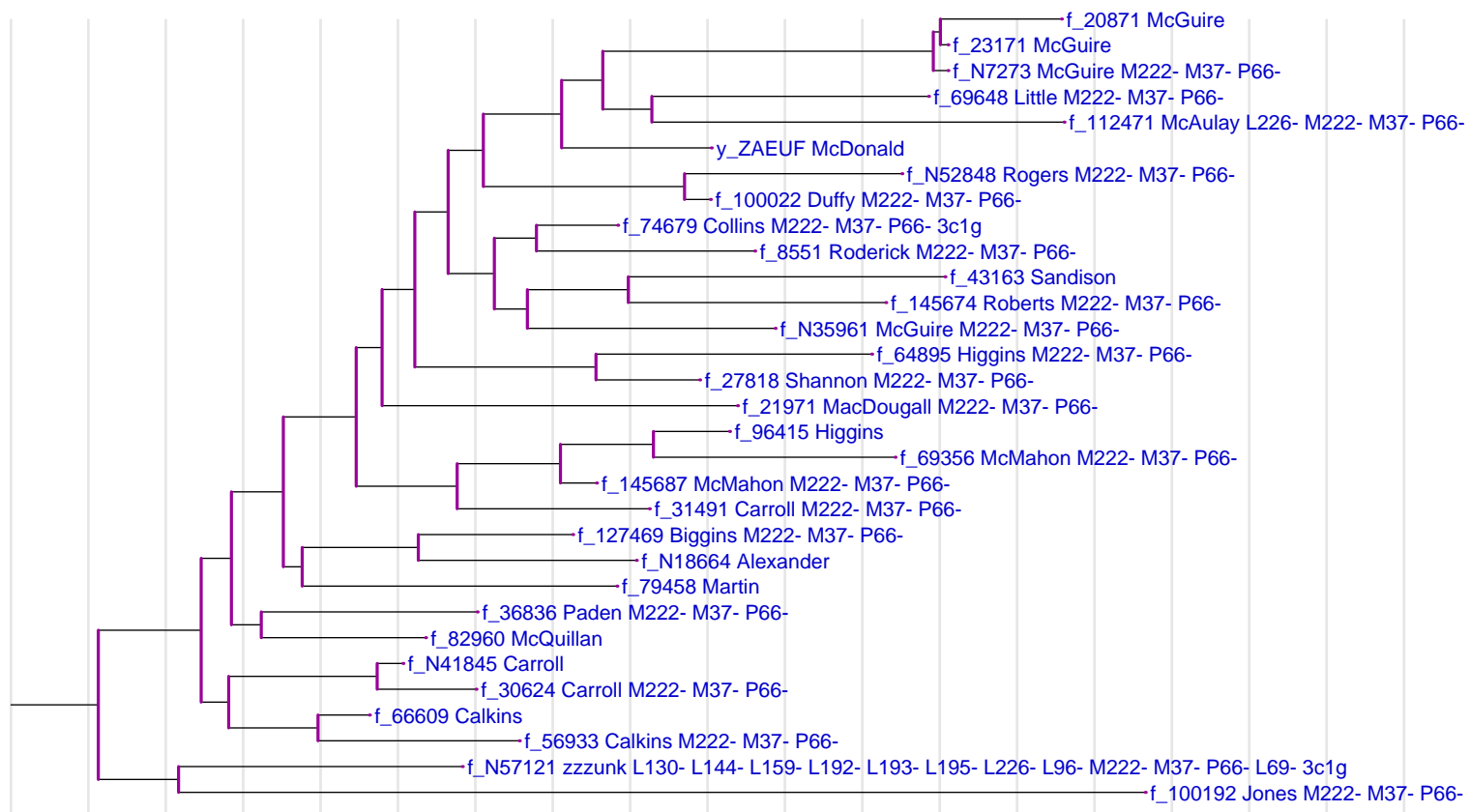


The rule separation is 10 generations.

Scots Cluster

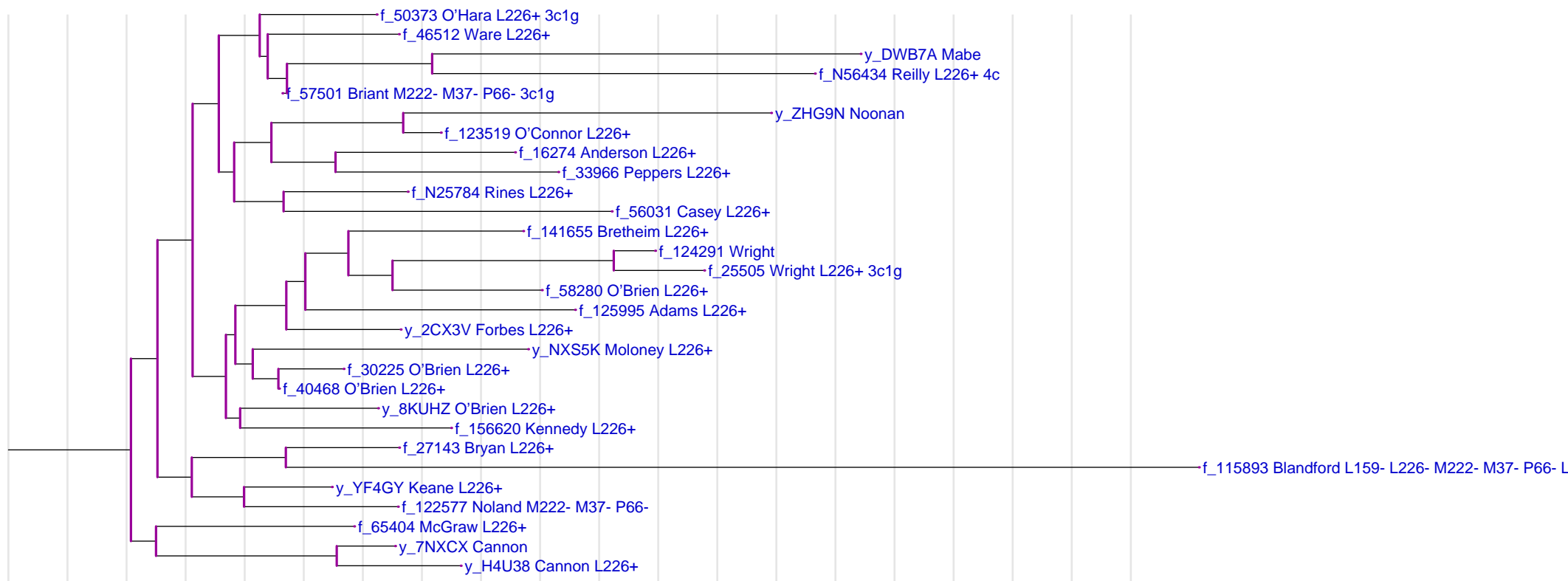


Clan Colla

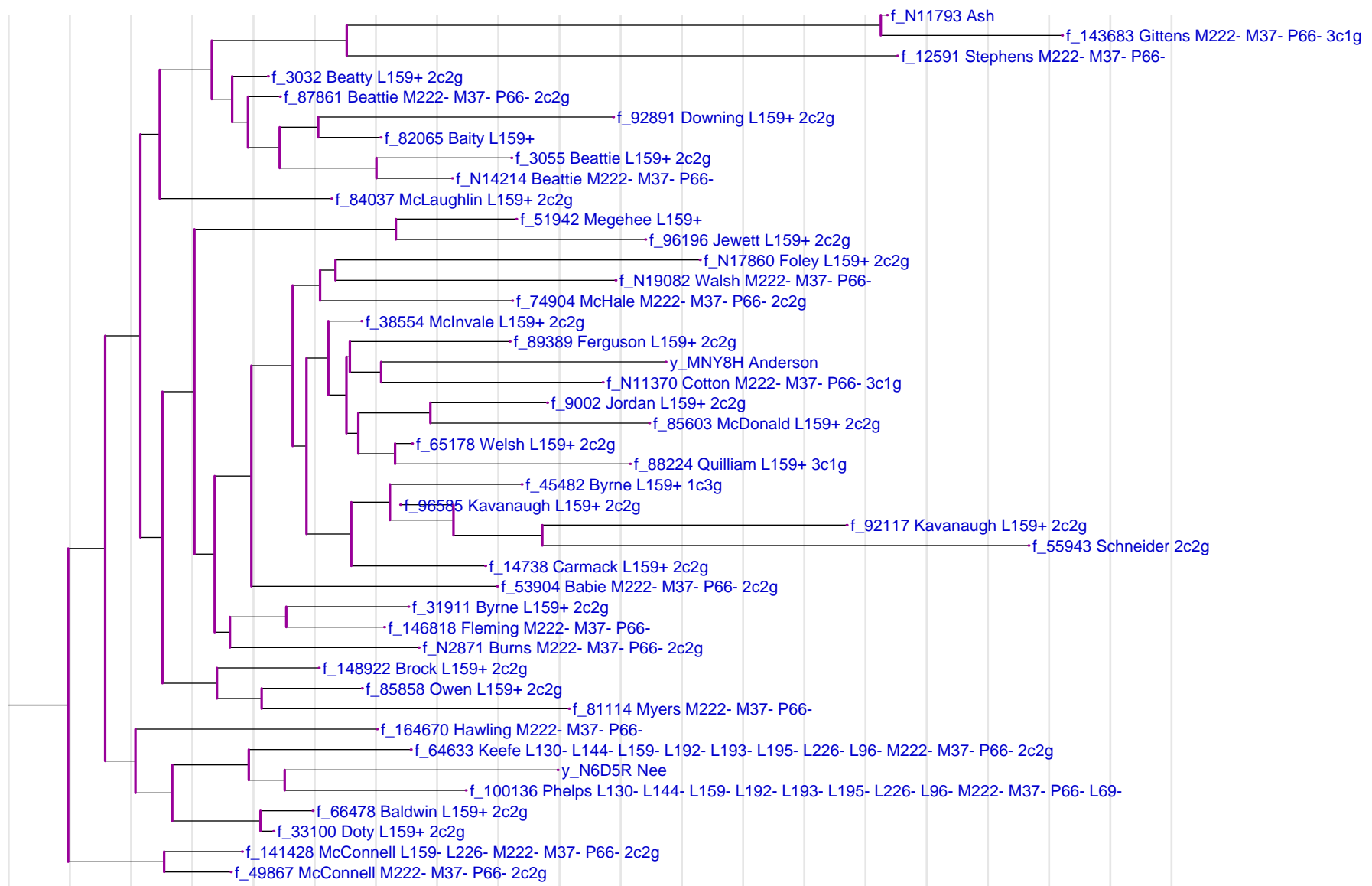


The rule separation is 10 generations.

Irish Type III



L159+ (maybe a bit more)

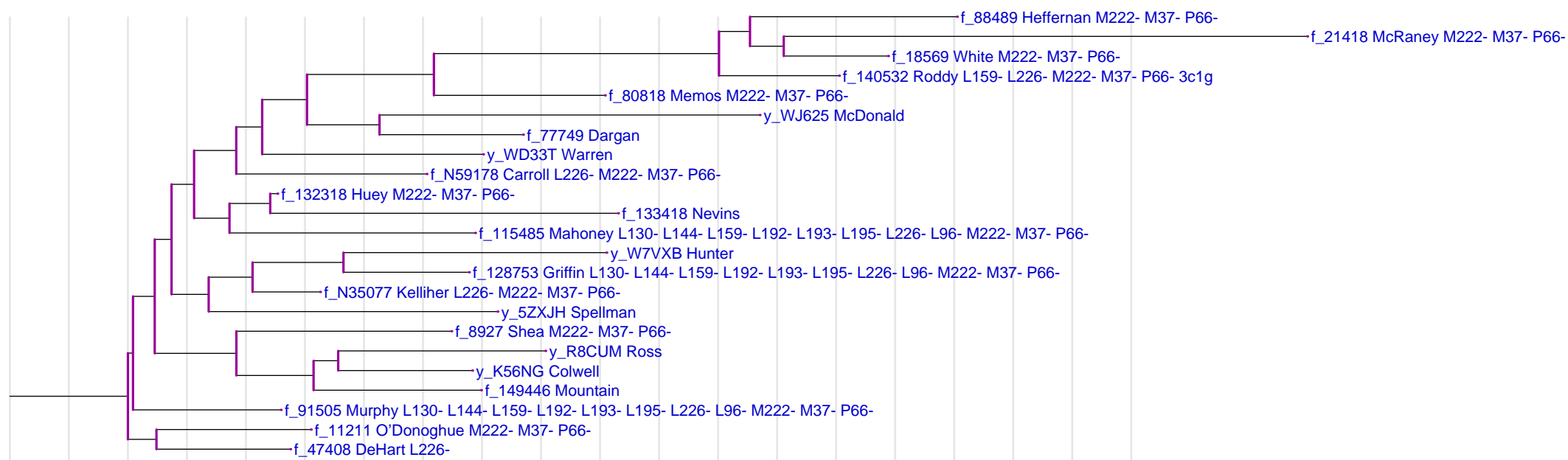


The rule separation is 10 generations.

L144+

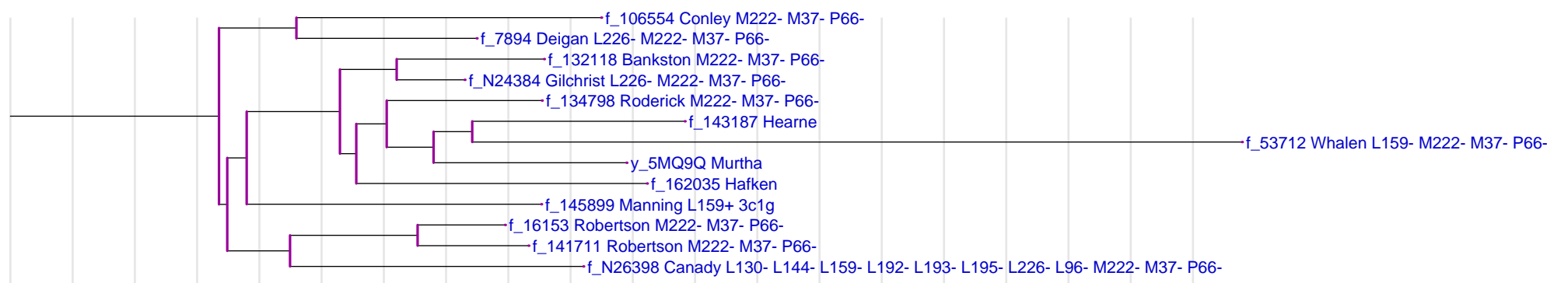
f_83115 Whelan L144+ L195+ 3c1g
f_55018 Brazile L144+
f_57993 Prosser M222- M37- P66-

subset of Variation 1011

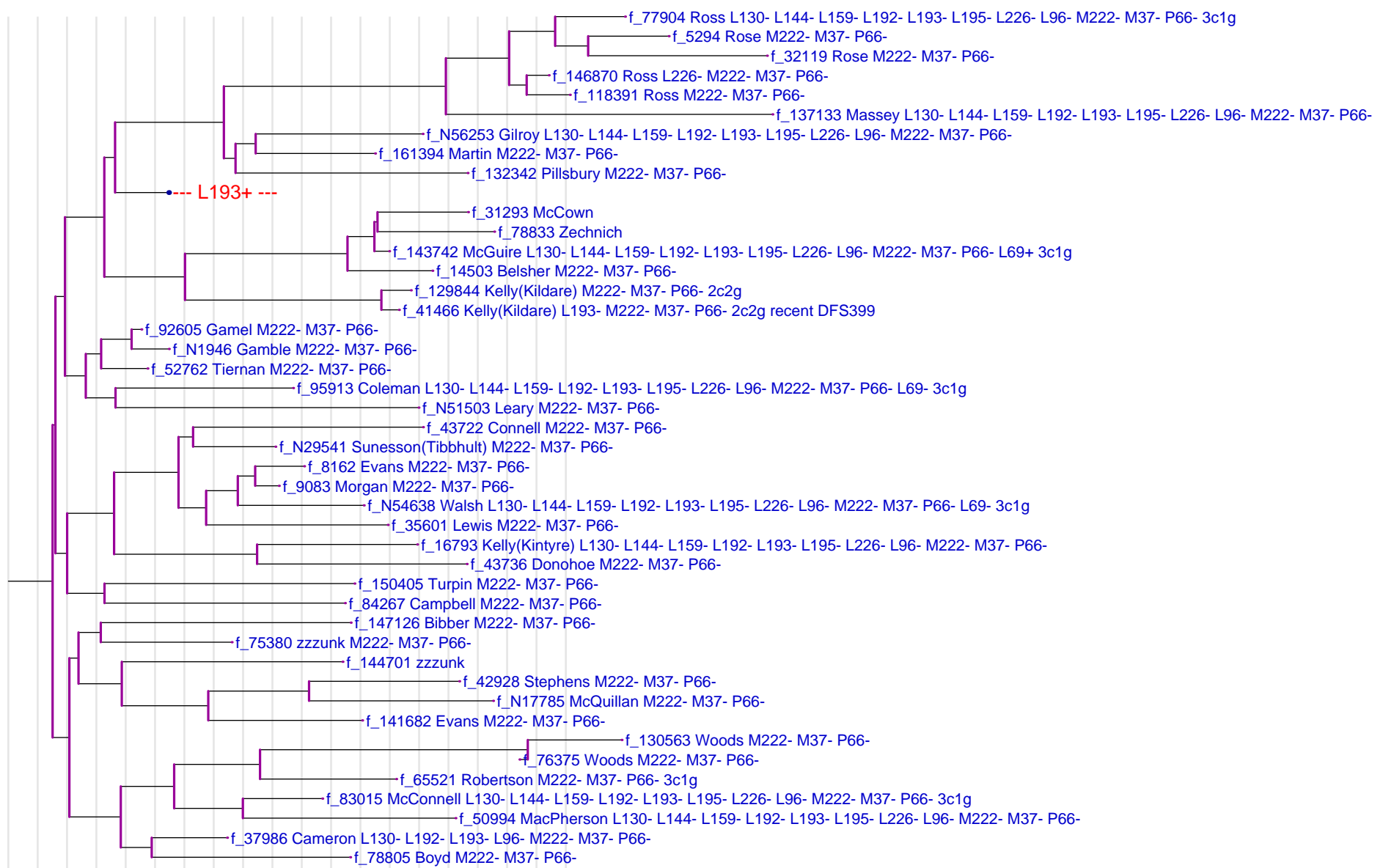


The rule separation is 10 generations.

Variation 1117



Variation 1113



The rule separation is 10 generations.

L193+

